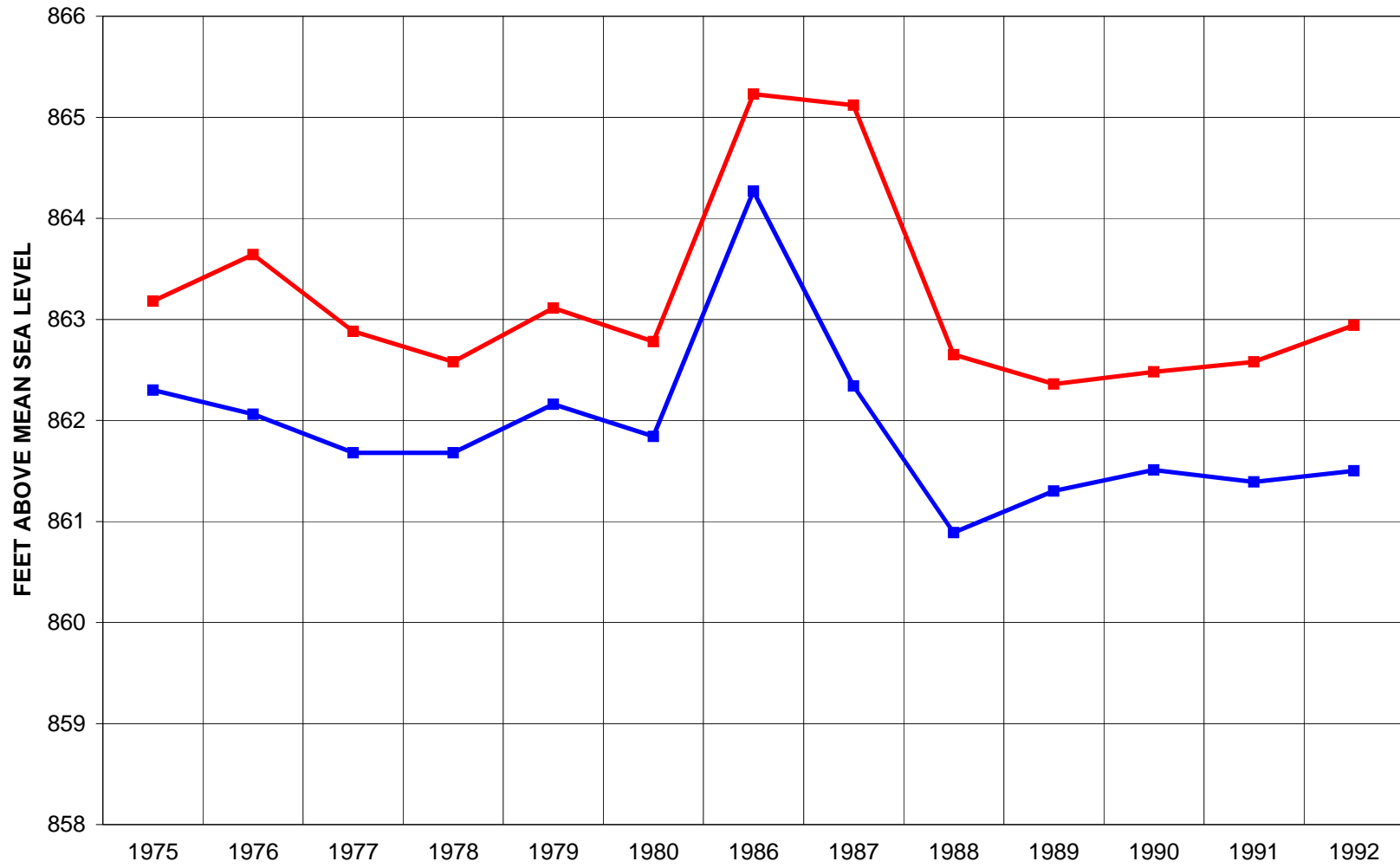
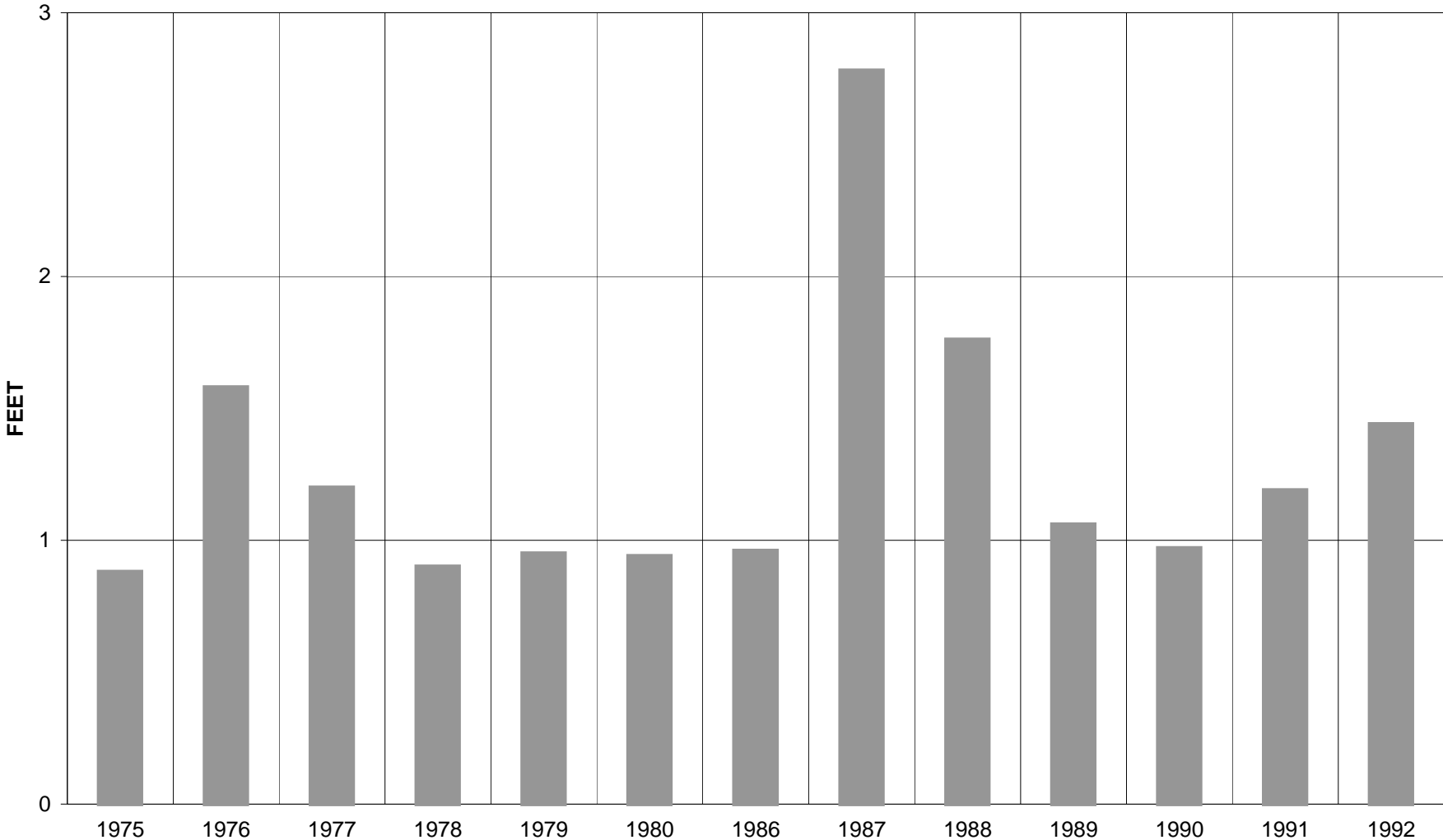


SILVER LAKE WATER LEVELS

—■— HIGH* —■— LOW*



**SILVER LAKE ANNUAL
DIFFERENCE BETWEEN HIGH AND LOW WATER LEVEL**



DAY	YEAR	HIGH*	LOW*	DAY	DATA SOURCE	LEVEL CHANGE ft	COMMENTS
5/31	1975	863.18	862.3	8/23	USGS	0.88	NO DATA JAN TO APR
4/17	1976	863.64	862.06	10/28	USGS	1.58	
4/23	1977	862.88	861.68	10/29	USGS	1.2	
6/2	1978	862.58	861.68	11/10	USGS	0.9	
6/10	1979	863.11	862.16	11/14	USGS	0.95	
5/1	1980	862.78	861.84	9/8	USGS	0.94	NO DATA OCT TO DEC
11/1	1986	865.23	864.27	9/4	USGS	0.96	
1/1	1987	865.12	862.34	11/23	USGS	2.78	
4/10	1988	862.65	860.89	9/12	USGS	1.76	
4/11	1989	862.36	861.3	10/14	USGS	1.06	
6/27	1990	862.48	861.51	1/2	USGS	0.97	
4/15	1991	862.58	861.39	10/4	USGS	1.19	
4/17	1992	862.94	861.5	8/31	USGS	1.44	NO DATA AUG TO DEC

YEAR	LEVEL CHANGE ft
1975	0.88
1976	1.58
1977	1.2
1978	0.9
1979	0.95
1980	0.94
1986	0.96
1987	2.78
1988	1.76
1989	1.06
1990	0.97
1991	1.19
1992	1.44

* IN FEET ABOVE MEAN SEA LEVEL